

Washington Quarters Reverse Varieties Quick Reference Guide*

Production Years	RDV-001	RDV-002	RDV-002	RDV-003	RDV-004	RDV-005	RDV-006	RDV-007	RDV-008
	Type A	Type B	Type B-1	Type C	Type D	Type E	Type F	Type G (M)	Type H
	<i>I</i>	<i>IIa</i>	<i>IIa</i> (Polished Die)	<i>IIIo</i>	<i>IIIa1</i>	<i>IIIa2</i>	<i>IIIb</i>	<i>IIIm</i>	<i>IIb</i>
1932-1964	Common								
1936 Proof	Common								
1937-64 Proofs		Common							
1956	Common	Scarce							
1957	Common	Uncommon							
1958	Common	Uncommon							
1959	Common	Uncommon							
1960	Common	Uncommon							
1961	Common	Uncommon							
1962	Common	Uncommon							
1963	Common	Uncommon	Very Rare						
1964	Common	Uncommon							
1964-D	Common			Very Scarce					
1965				Scarce	Unconfirmed	Common			
1965 SMS				Unconfirmed	Common	Common			
1966				Unconfirmed	Common	Common			
1966 SMS				Unconfirmed	Common	Common			
1967				Rare	Common	Common	Rare		
1967 SMS				Unconfirmed	Common	Common	Unconfirmed		
1968					Common	Common	Common		
1968-D					Common	Common	Common		
1968-S Proof						Rare	Scarce	Common	Common
1969							Common	Common	
1969-D					Very Scarce		Unconfirmed	Scarce	Rare
1969-S Proof									Common
1970							Common	Rare	
1970-D							Common	Common	Rare
1970-S Proof									Common
1971							Common		
1971-D							Common		Rare
1971-S Proof									Common
1972							Common		
1972-D							Common		Rare
1972-S Proof									Common

*Using the Sheldon Scale and populations are estimated.

(Updated 4/04/2022)

Pro Tip: Assemble a reference set of common reverse issues for each variety to assist you in verifying uncommon or rare RDVs. For instance, comparing the 1971 RDV-006 and the 1968-S Proof RDV-007 will help you distinguish between these two RDVs more easily.

Washington Quarters Common Varieties To Use As References							
DV-001	RDV-002	RDV-003	RDV-004	RDV-005	RDV-006	RDV-007	RDV-008
Type A	Type B	Type C	Type D	Type E	Type F	Type G (M)	Type H
<i>I</i>	<i>IIa</i>	<i>IIIo</i>	<i>IIIa1</i>	<i>IIIa2</i>	<i>IIIb</i>	<i>IIIm</i>	<i>IIb</i>
1964	1964 Proof	1965 (Scarce)	1968-D	1969-D	1971	1968-S	1969-S Proof

(Updated 2/07/2022)

Washington Quarters Reverse Design Varieties (RDV) Quick Reference Guide

By
José M. Gallego
JMGallego@LosGallego.com

Instructions

Use this Quick Reference Guide to help you identify Washington Quarters RDVs. The images provided highlight key distinguishing features but may not include all identifying characteristics.

The following information is listed below each photo:

CONECA Designation: The variety's designation according to the Combined Organization of Numismatic Error Collectors of America (e.g., **RDV-001**).

Common Name: The variety's common name (e.g., Type A).

Die Identification or Reverse Die Variety: The specific die identification or Reverse Die Variety (e.g., **IIa**).

Production Years: The years during which the Washington Quarters with this RDV were produced (e.g., **1956-1964**).

Under the description the red text below the photo indicates the years to search. Followed by a list of identifying features is provided, ordered by priority.

A table on the back of this guide shows all Washington Quarters RDVs, including standard strikes for reference. Searchable varieties are highlighted in red within the 'Production Years' column.

For comprehensive information on each RDV, please refer to the presentation, "Washington Quarters Reverse Design Varieties (RDV) From A to H, and Beyond."

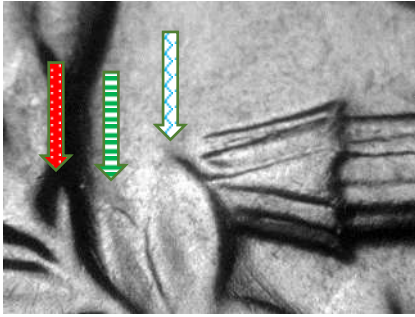
Your feedback, suggestions, and updates are always. Please share them at JMGallego@LosGallego.com.

Corrections, suggestions, or updates are always welcome.

Best wishes in your searches,
José Miguel Gallego
JMGallego@LosGallego.com

(*Updated 04/3/2022)

Quick Pick-Up Points for Washington Quarters Reverse Design Varieties (RDV)



RDV-001 (A) (I) (1932-1964)

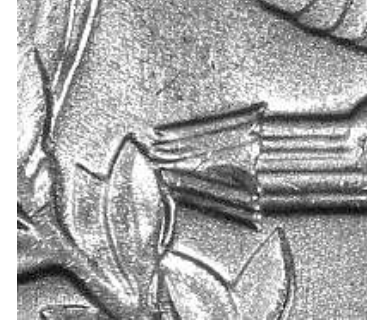
• Standard design for 1932-1964 • weak strike. • No serif on N • No Doubling on Q • Long leg "N."
(Arrows: "Left bud," "Far left leaf," and "Leaf next to arrow tips")



RDV-002 (B) (II_a) (1937-1964)

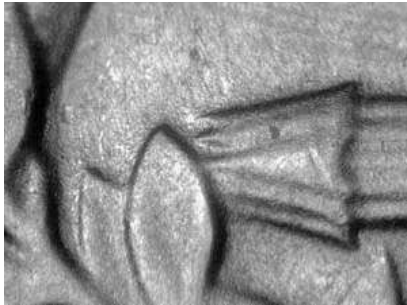
(Common design on Proofs Issues)

1956-1964: • Leaf above arrow tips • High Relief • Pointed wingtip only on your left side • No serif on N • No Doubling on Q.
(*Top Insert is the 1963 RDV-002 "B-1". Due to over die polish, the arrow tips are sharp, and the top two arrow tips are away from the leaf)



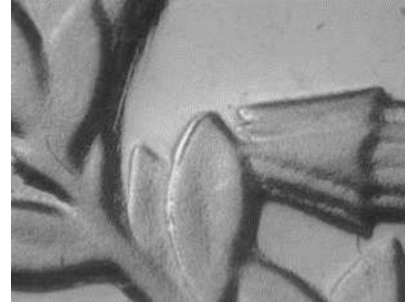
RDV-003 (C) (III_b) (1964D-1967)

1964-D, 1965(CS)*, 1967(CS)*: • Serif on N of UNUM (Best seen with coin upside down) • No Doubling on Q • Very sharp, raised tail feathers, and a centerline on each feather • Low profile, "flat" looking • Sharp arrow tips
• Arrows separated from leaf • Left bud: slightly above the far left leaf.



RDV-004 (D) (III_{a1}) (1965-1969D)

1969-D: • No serif on N • No Doubling on Q • EPU is in of low relief, and wide • Widest left leaf • The inner edge of the eagle's left fades into the field • Far left leaf looks tilted to the left compared with RDV-005 • Very sharp-pointed leaf below arrow tips • Sharp arrow tips • Weak inner right wing • Arrows separated from leaf • Left bud: slightly above the far left leaf.



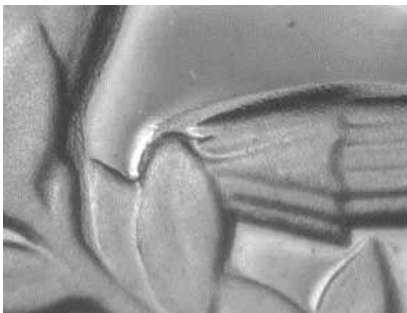
RDV-005 (E) (III_{a2}) (1965-1969D)

1968-S Proof: • No serif on N • No Doubling on Q • Thin and high relief EPU letters • Narrowest left leaf pointed • Far left leaf looks pointing up compared with RDV-004 • Rounded arrow tips • Incuse outline next to the inner edge of the eagle's left wings • Top two arrow tips quite far apart from leaf • Left leaf with dip • Has an incuse line on the inside edges of the vertical wing segments • Left bud: slightly above the far left leaf.



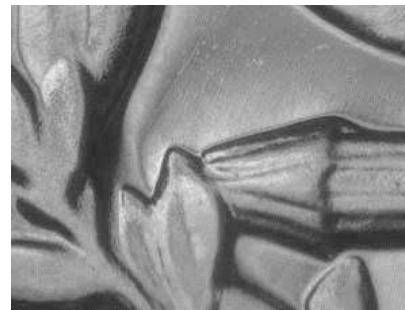
RDV-006 (F) (III_b) (1967-1972D)

1967(CS)*, 1968S Proof, 1969-D: • Serif on N • Doubling on Q • Pointed-leaf with doubling • Rounded arrow tips • Far left leaf shorter than others, leveled with bud • Left leaf with shows a clear vertical and tighter pointed tip and with doubling.



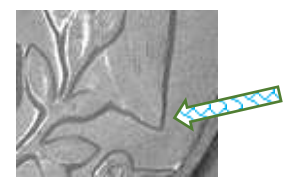
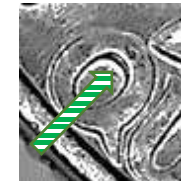
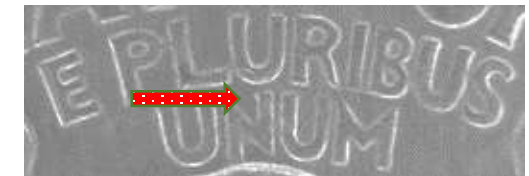
RDV-007 (G/M) (III_m) (1968S-1970D)

1969-D, 1970P: • Serif on N • Doubling on Q • Rounded spoon shape and doubled leaf • High relief secondary wings, sharp and well-defined • Sharp longer pointed left leaf • Rounded arrow tips • Left bud: almost leveled and in contact with the far left leaf.



RDV-008 (H) (II_b) (1968-S-1972S)

1969-D, 1970-D, 1971-D, 1972-D: • No Serif on N of UNUM • No Doubling on Q • Leaf above arrow tips • High Relief • Both wingtips are pointed • Top two arrow tips quite close to leaf • Left bud: slightly above far left leaf
• Center lines added to tail feathers.



Location of Other Pick-up Points

Arrows: "Serif on N of UNUM", "Doubling on Q" and "Pointed left wing tip"
CS* = Circulation Strike